

Haven Ports Yacht Club

Graham Wallis Trophy 2023

Sailing Instructions

Organised by the *Haven Ports Yacht Club* in association with the *Royal Temple Yacht Club* and the *East Anglian Offshore Racing Association*

Sunday 18th June 2023

First Warning Signal: 0755 BST

High Water: Ramsgate: 12:40 BST 4.8M; Harwich: 12:40 BST 3.8M

CONTACT DETAILS

	Race Committee	Coastguard	Race Office
Start	Royal Temple Yacht Club	HM Coastguard Dover VHF Channel 16 +44 (0) 01255 675518 (For Notification of retirements or in an emergency) Zone13@hmcg.gov.uk	Race Officers: <i>Mike Wallis 07860350209</i> & <i>Ian Hart 07831323364</i>
Finish	Principal Committee Vessels: "Windrunner" a 42ft white yacht. White mast & Grey boom cover. Call Sign "Offshore One" on VHF Channel 72		Race Officer: Andrew Wise 07967 670 995 andy.wise@lemoncat.com Alternative contacts: Paul Wood 07768 351048 Claire Scott 07990 041569

YACHTS RETIRING FROM THE RACE MUST IMMEDIATELY NOTIFY RACE HEADQUARTERS AT THE FINISH OR HM COASTGUARD AS APPROPRIATE.

Failure to comply may lead to exclusion from future EAORA/RORC racing.

THE ATTENTION OF EVERY PERSON IS DRAWN TO WORLD SAILING SPECIAL REGULATION 1.02 AND TO THE IMPORTANCE OF HAVING SUITABLE AND ADEQUATE PERSONAL INSURANCE.

SAILING INSTRUCTIONS

The responsibility for a boat's decision to participate in a race or to continue racing is hers alone. (RRS fundamental rule 3)

1. RULES

1.1. The race will be governed by:

1.1.1. The rules as defined in The Racing Rules of Sailing (RRS).

1.1.1.1. RRS part 2 rules will be replaced with the right-of-way rules of the International Regulations for Preventing Collisions at Sea (IRPCAS) between the times of local sunset and sunrise; or government right-of-way rules if applicable.

1.1.2. The RYA Prescriptions to the Racing Rules which can be found on the RYA Website. www.rya.org.uk

1.1.3. World Sailing's Offshore Special Regulations Category 3 with Category 2 life rafts.

1.1.4. The rules and regulations of appropriate Class rules; IRC Rules Parts A, B & C Rules.

1.1.5. The Notice of Race Part 1 which is available from the EAORA Website and its General Rules apply to all EAORA races.

1.1.6. The Notice of Race Part 2 which is also available from the EAORA Website and gives information about individual races. Both Documents may be modified by the Sailing Instructions for each race. www.eaora.org.uk

1.1.7. The by-laws of Harwich Haven Authority

1.1.7.1. Competitors should be aware that a boat sailing a converging course with a large commercial vessel may be held to have impeded its safe passage by approaching within its restricted visibility zone, even without having encroached within the deep water channel.

1.1.7.2. Competitors are required, while racing, to avoid navigating within the limits of the deep water channel or passing on the channel side to seaward of the Grisle buoy, as defined by straight lines joining consecutive channel marks including the Landguard buoy, and out to sea as far as the Cross buoy. For the purposes of the RRS such lines are to be regarded as a continuing obstruction.

1.1.7.3. Any boat which, being disabled or out of control, encroaches into the deep water channel shall promptly advise Harwich VTS on VHF channel 71 of her situation.

1.2. When a rule is modified by the Sailing Instructions, this shall take precedence over the Notice of Race, this changes RRS 63.7

2. EQUIPMENT AND MEASUREMENT CHECKS

2.1. A boat or equipment may be inspected at any time for compliance with the rules.

3. NOTICES TO COMPETITORS

3.1. Notices to competitors will be posted on the Official Notice Board at the HPYC Notices will also be displayed on the EAORA website.

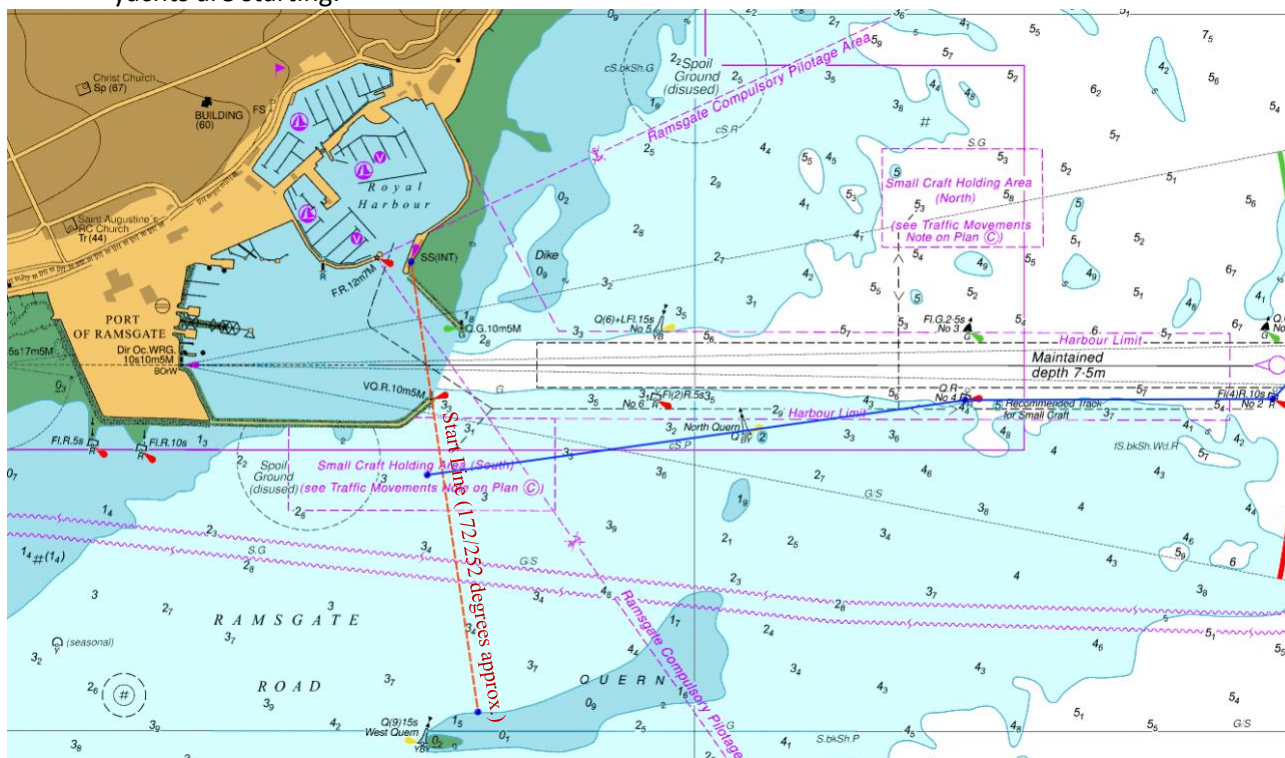
4. IDENTITY AND NUMBER OF PERSONS ON BOARD CHECK

4.1. Every yacht shall pass close by the start Committee Vessel, displaying her sail numbers and letters in the lifelines if no sail is hoisted and inform the Race Officer of the number of persons on board. This information may be transmitted to the Race Committee by VHF if an individual yacht is late for the start.

4.2. If there are fewer crew than on any crew list supplied to the Organising Authority, it is imperative that the Committee Boat is informed of the name(s) of the absent crew.

5. START LINE

- 5.1. The start line is a line projecting from the Orange triangle on the race hut, over the red port hand beacon on the end of the breakwater with the outer distance designated as the transit between the North Quern and West Quern buoys.
- 5.2. Yachts whose Warning Signals have not been made shall keep clear of the starting line when other yachts are starting.



6. STARTING TIMES AND SIGNALS

- 6.1. The Race Committee will broadcast a time check by VHF radio (channel 72) at 07:50 BST using a countdown procedure.
- 6.2. There shall be one combined start for all IRC classes as listed below, followed by one start for the MOCRA class.
- 6.3. The numbers or names of yachts OCS may be broadcast by the Race Committee

Time (BST)	CLASS	FLAG	SOUND SIGNAL
07:55	All IRC classes	Numeral Pennant 1 displayed	One sound signal
07:56		Preparatory Signal displayed	One sound signal
07:59		Preparatory Signal removed	One long sound signal
08:00		Numeral Pennant 1 removed	One sound signal
08:05	MOCRA Class	Numeral Pennant 8 displayed	One sound signal
08:06		Preparatory Signal displayed	One sound signal
08:09		Preparatory Signal removed	One long sound signal
08:10		Numeral Pennant 8 removed	One sound signal

7. THE COURSE

- 7.1. The course for this race will be chosen by the race officer from the courses in Appendix A.
- 7.2. If a mark is not seen a yacht shall supply with the declaration satisfactory evidence that the mark has been passed correctly.

8. AREAS THAT ARE OBSTRUCTIONS

- 8.1. See EAORA Notice Of Race Part 1 paragraph 10.

9. COMMUNICATION

- 9.1. The Race Committee may broadcast information on VHF ch72, call sign "Offshore One".
- 9.2. Yachts are reminded to keep a watch on VHF ch72 during the start and as requested at the finish.
- 9.3. Yachts are reminded of their legal obligation to keep a continuous watch on VHF Ch16

10. REPORTING IN A SLOW RACE OR ROUGH WEATHER (Force 7 and above)

- 10.1. In the event of rough weather all Yachts shall endeavour to report to the Race Committee their whereabouts and status at reasonable intervals (if possible 4-hourly), and pass on information about other boats if known.
- 10.2. Inter-boat communication calls should when possible be on DSC or VHF ch16 as a calling Channel and VHF ch72 as a working Channel.
- 10.3. Yachts with communications in addition to VHF should act as a link, taking other boats' reports on VHF and passing them to the Race Committee or Coastguard.

11. RETIREMENTS

- 11.1. Yachts retiring should inform the Race Officer at the finish as soon as possible by telephone or VHF ch72 or inform HM Coastguard on +44 (0) 1255 675518 or by VHF ch16 that they have retired and their intentions.

12. APPROACH TO THE FINISH

- 12.1. All yachts are required to set listening watch on VHF ch72 when approximately 30 minutes from the finish and at that time to call "Offshore One" to advise Estimated Time of Arrival at the finish line.
- 12.2. At night or in poor visibility yachts should assist with identification at the finish line by calling "Offshore One" again on the final approach to the finish line. At all times be ready to assist with identification at the finish line and keep VHF watch until berthed. The PRO will maintain a watch on VHF ch72 and mobile phone.

13. THE FINISH

- 13.1. *A line between the foremast of the Committee Vessel and the South Shelf channel mark to Starboard (located approximately 2 cables east of the seaward end of Dovercourt breakwater).*
 - 13.1.1. If the Committee Vessel is not present competitors are required to take their own finish times – the time should be taken when the South Shelf mark bears 90 degrees magnetic.
- 13.2. Finishing times shall be delivered to the EAORA Race Officer as soon as possible. If this is a separate watch then that watch must be checked against the official time clock.
- 13.3. Confirmation of Arrival: It is extremely important that every boat confirms her arrival as quickly as possible to the Committee Vessel, or Race Office when no Committee Vessel is on station. Boats failing to comply with this rule may find themselves disqualified from the race.

14. DECLARATIONS

- 14.1. Competitors are reminded that under EAORA Notice of Race Part 1 para 15 they are required to complete a Declaration Form. Yachts shall complete a Declaration Form and submit it to the Race Officer as soon as possible after the race. Declarations may be made on paper or sent via SMS, email or WhatsApp to the Race Officer's mobile or e-mail. Failure to comply with this rule may result in the yacht being excluded from the results.
- 14.2. In the event of a yacht not entering the finish port declarations shall be sent electronically as soon as possible after the finish.
- 14.3. When a yacht retires from the race, she shall write the reasons on her Declaration Form.
- 14.4. Declarations must include: Yacht Name, Sail Number, Finish Time (BST), yacht ahead, yacht astern.

15. SCORING

- 15.1. EAORA will supply all race result details as soon as possible after the race has finished such that points can be awarded in all series and Trophies/medallions awarded.
- 15.2. Where necessary, EAORA yachts will be extracted from the results and rescored within the EAORA classes and awarded points within the EAORA series and presented with the relevant race prizes.

16. PENALTY SYSTEM

- 16.1. Standard Penalties:
 - 16.1.1. Under World Sailing Test Rule DR21-01, the definition Start is changed as follows:

A boat starts when her hull having been entirely on the pre-start side of the starting line, and having complied with rule 30.1 if it applies, any part of her hull crosses the starting line from the pre-start side to the course side either

 - (a) at or after her starting signal, or
 - (b) during the last 10 seconds before her starting signal.

When a boat starts in accordance with item (b) of the definition Start, she may return to the pre-start side of the line to comply with item (a) of the definition of Start, but, if she does not the starting penalty shall be a time penalty of 10% (NoR Part 1 para 11.3 & RRS 44).
 - 16.1.2. For a breach of any area designated an Obstruction, i.e. Traffic Separation Schemes, the Race Committee shall, without a hearing, apply a standard time penalty of 10% (NoR Part 1 para 11.3 & RRS 44), unless the breach was unavoidable and unintentional, and no advantage was gained. This changes RRS 63.1 and A5.
- 16.2. Should the Race Committee consider a standard penalty to be inappropriate, it shall protest the boat.
- 16.3. If, in a valid hearing brought by the Race Committee under Sailing Instruction 16.2 or by another boat, a boat is found to have infringed RRS 28, 29.1 or the Sailing Instructions, the penalty will be at the discretion of the Protest Committee but will not be less than the standard penalty.
- 16.4. Other Penalties:

When the Protest Committee decides that a boat that is party to a protest hearing has broken a rule other than RRS Part 1 and 2 and that no serious damage or injury was caused and no significant advantage has been gained, it may apply a time penalty of 10% (NoR Part 1 para 11.3 & RRS 44). Should the Protest Committee decide that the breach was minor and unintentional it may at its discretion choose to give a warning.

17. PROTESTS AND REQUESTS FOR REDRESS

- 17.1. Protests may be written on plain paper when Protest forms are not available. Protests and requests for redress or reopening shall be delivered to the race office within the appropriate time limit.
- 17.2. The protest time limit is 3 hours after the protesting boat finishes.
- 17.3. Notices will be posted no later than 30 minutes after the protest time limit for the last boat to finish the race.
- 17.4. The notification of a Protest by the Race or Protest Committee against a competitor as required under RRS 61.1(b) or (c) shall consist of a notice on the Official Notice Board.

18. TROPHIES AND PRIZES

- 18.1. Graham Wallis Trophy; EAORA Trophies & Glassware

19. RISK STATEMENT

- 19.1. Rule 3 of the Racing Rules of Sailing states: "The responsibility for a boat's decision to participate in a race or to continue racing is hers alone."
- 19.2. Sailing is by its nature an unpredictable sport and therefore inherently involves an element of risk. By taking part in the event, each competitor agrees and acknowledges that:

- 19.2.1. they are aware of the inherent element of risk involved in the sport and accept responsibility for the exposure of themselves, their crew and their boat to such inherent risk whilst taking part in the event;
- 19.2.2. they are responsible for the safety of themselves, their crew, their boat and their other property whether afloat or ashore;
- 19.2.3. they accept responsibility for any injury, damage or loss to the extent caused by their own actions or omission;
- 19.2.4. their boat is in good order, equipped to sail in the event and they are fit to participate;
- 19.2.5. the provision of a race management team, other officials and volunteers by the event organiser does not relieve them of their own responsibilities;
- 19.2.6. they are responsible for ensuring that their boat is equipped and seaworthy so as to face extremes of weather; that there is a crew sufficient in number, experience and fitness to withstand such weather; and that the safety equipment is properly maintained, stowed, in date and familiar to the crew.

APPENDIX A OF THE SAILING INSTRUCTIONS

Note – All positions are approximate and “not for navigation”.

Course A

No:	Name:	Pass To:	Lat:	Lon:
0	RTeYC Start Line		51° 19' 20.4" N	001° 25' 26.0" E
1	North Quern	S	51° 19' 24.8" N	001° 26' 07.0" E
2	Ramsgate No 4	P	51° 19' 27.7" N	001° 26' 36.1" E
3	Ramsgate No 2	P	51° 19' 27.8" N	001° 27' 17.2" E
4	Broadstairs Knoll	P	51° 20' 52.8" N	001° 29' 27.6" E
5	Elbow	P	51° 23' 13.2" N	001° 31' 37.2" E
6	Outer Fisherman	P	51° 34' 01.2" N	001° 25' 06.0" E
7	Black Deep No 8	S	51° 36' 21.5" N	001° 20' 25.6" E
8	Black Deep No 3	P	51° 42' 23.6" N	001° 26' 39.3" E
9	Sunk Head Tower	P	51° 46' 40.8" N	001° 30' 32.4" E
10	NE Gunfleet	S	51° 49' 55.9" N	001° 27' 47.6" E
11	Cork Sand Yacht Beacon	P	51° 55' 12.6" N	001° 25' 11.9" E
12	Outer Ridge	S	51° 54' 52.6" N	001° 20' 25.7" E
13	Landguard	S	51° 55' 26.4" N	001° 18' 50.4" E
14	Cliff Foot	S	51° 55' 42.9" N	001° 18' 32.3" E
15	Finish Line - South Shelf		51° 56' 09.6" N	001° 18' 30.8" E

Distance – approximately 47 miles

Course B

No:	Name:	Pass To:	Lat:	Lon:
0	RTeYC Start Line		51° 19' 20.4" N	001° 25' 26.0" E
1	North Quern	S	51° 19' 24.8" N	001° 26' 07.0" E
2	Ramsgate No 4	P	51° 19' 27.7" N	001° 26' 36.1" E
3	Ramsgate No 2	P	51° 19' 27.8" N	001° 27' 17.2" E
4	Broadstairs Knoll	P	51° 20' 52.8" N	001° 29' 27.6" E
5	Elbow	P	51° 23' 13.2" N	001° 31' 37.2" E
6	Kentish Knock	P	51° 38' 05.1" N	001° 40' 25.7" E
7	Longsand Head	P	51° 48' 07.4" N	001° 39' 23.6" E
8	NE Gunfleet	S	51° 49' 55.9" N	001° 27' 47.6" E
9	Cork Sand Yacht Beacon	P	51° 55' 13.0" N	001° 25' 12.0" E
10	Outer Ridge	S	51° 54' 52.6" N	001° 20' 25.7" E
11	Landguard	S	51° 55' 26.4" N	001° 18' 50.4" E
12	Cliff Foot	S	51° 55' 42.9" N	001° 18' 32.3" E
13	Finish Line - South Shelf		51° 56' 09.6" N	001° 18' 30.8" E

Distance – approximately 49 miles

END OF SAILING INSTRUCTIONS

Additional Notes for Competitors

(These notes are NOT part of the Sailing Instructions)

1. *BERTHING ARRANGEMENTS*

There are no mandated berthing requirements, competitors are welcome to use Suffolk Yacht Harbour or any other facility they chose.

2. *CATERING*

Haven Ports Yacht Club has an excellent Steward. The menu is great, please book ahead to avoid disappointment. Times are flexible.

Email dining@hpyc.com

3. *LOCAL SHOPS*

There are no local shops in the vicinity of Suffolk Yacht Harbour.

4. *CAR PARKING*

Is available at Suffolk Yacht Harbour

5. *PRIZE GIVING PARTY*

Prize Giving will be at the HPYC after racing.

THANK YOU

END OF ADDITIONAL NOTES