



Royal Burnham Yacht Club

The Quay
Burnham On Crouch
Essex CM0 8AU

Tel 01621 782044
Fax 01621 784779

EAORA / RORC EAST COAST RACE **Friday 12th June 2015**

Organising Authority: Royal Burnham Yacht Club in association with the East Anglian Offshore Racing Association and the Royal Ocean Racing Club

First Warning Signal 1855

HW Burnham-on-Crouch on Friday 2140 BST 4.5M

Oostende: 1046 BST 4.5M (add 1 hour for Belgian Summer time)

Contacts

	<u>Race Committee</u>	<u>Coastguard</u>	<u>Race Office</u>
<u>Start</u>	Committee Vessel "Jane" a White hulled Fairey Huntsman 28 Motor Boat. Call Sign "Offshore One" on VHF Channel 72 Mobile: +44 (0)7967 670 995	Thames Coastguard VHF Channel 16 +44 (0) 01255 675518 (For Notification of retirements or in an emergency) wm.thames@mcga.gov.uk Dover Coastguard VHF channel 16 +44 (0) 1304 210008 wm.dover@mcga.gov.uk (Fleet Crossing Sunk area)	Race Officer Andrew Wise Royal Burnham Yacht Club, The Quay, Burnham on Crouch, Essex, CM0 8AU 01621 782 044 Email: info@rbyc.org.uk
<u>Finish</u>	Committee Vessel call Sign "Offshore One" on VHF Channel 72 Mobile: +44 (0) 7793 372 548 The Location of the Race Officer at the finish will be notified to competitors prior to the start of the race as the committee vessel has yet to be confirmed. Pleased be advised that the VHF and mobile contact points will be monitored at all times.	As Above	Principal Race Officer Brian Bolton Committee Vessel at Oostende Marina or on the finish line.

YACHTS RETIRING FROM THE RACE MUST IMMEDIATELY NOTIFY RACE HEADQUARTERS AT THE FINISH OR THAMES COASTGUARD AS APPROPRIATE.

Failure to comply may lead to exclusion from future EAORA/RORC racing.

THE ATTENTION OF EVERY PERSON IS DRAWN TO ISAF SPECIAL REGULATION 1.02 AND TO THE IMPORTANCE OF HAVING SUITABLE AND ADEQUATE PERSONAL INSURANCE.

Sailing Instructions Part 1

The responsibility for a boat's decision to participate in a race or to continue racing is hers alone. (RRS fundamental rule 4)

The 2015 Sailing Instructions Part 1 are available from the EAORA Website and are the definitive Sailing Instructions for all EAORA Races including the East Coast Race. www.eaora.org.uk

The instructions given in Sailing Instructions Part 1 shall apply except when modified in Sailing Instructions Part 2 below.

END OF SAILING INSTRUCTIONS PART 1

Part 2 Sailing Instructions

1. Rules:

The EAORA Sailing Instructions Part 1 paragraph 1 is amended by the addition of the following items:

- RORC General Conditions and race details in the RORC 2015 Programme.
- AND ISAF Offshore Special Regulations with RORC prescriptions as printed in the RORC 2015 Programme (the category for each race is stated in the EAORA Notice of Race and the RORC Programme).
- One-design or other class or handicap rules where applicable.
- The Notice of Race as published on the EAORA website – www.eaora.org.uk
- The Part 1 & 2 Sailing Instructions
- The bylaws of the Crouch Harbour Authority

When there is conflict succeeding items in the list above shall take precedence.

Competitors are reminded of EAORA Rule 1.3 as published in the Part 1 Sailing Instructions - *between sunset and sunrise RRS Part 2 shall not apply and is replaced with the IRPCAS (International Regulations for the Prevention of Collisions At Sea).*

2. Radar Reflectors

ISAF Offshore Special Regulations 4.10, EAORA recommends that radar reflectors be flown at all times during this race.

3. Identity And Number Of Persons On Board Check

Every yacht shall pass close by the start vessel displaying her sail numbers and letters in the lifelines, if no sail is hoisted, on the Committee Boat side (Starboard hand side), and inform the PRO/ARO of the number of persons on board.

If there are fewer crew than on the supplied crew list, it is imperative that the Committee Boat is informed of the names of the absent crew. A yacht shall not sail with a crew member whose emergency contact details have not been lodged with Race Headquarters before the start of the race.

The PRO will lodge a list of competitors and the number of people on board with Thames Coastguard and the Principal Race officer in Oostende as soon as possible after the start of the race.

4. Classes & Flags

<u>Class</u>	<u>TCC</u>	<u>Class Flag</u>
<u>IRC CK*</u>	<u>0.850 and greater</u>	<u>Pennant 9</u>
<u>IRC Z</u>	<u>1.275 and greater</u>	<u>Pennant 0</u>
<u>IRC 1</u>	<u>1.101 – 1.274</u>	<u>Pennant 1</u>
<u>IRC 2</u>	<u>1.051 – 1.100</u>	<u>Pennant 2</u>
<u>IRC 3</u>	<u>1.007 – 1.050</u>	<u>Pennant 3</u>
<u>IRC 4</u>	<u>0.850 – 1.006</u>	<u>Pennant 4</u>

*IRC CK is a separate class within IRC for yachts with canting keels.

5. Time Check

The Race Committee will broadcast a time check by VHF radio (channel 72) at 18:50 using a countdown procedure. (EAORA Part 1 SI's 12.2)

6. Start Line

The Start Line will be as defined in the Notice of Race for the East Coast Race as published on the EAORA website. The committee boat will be a white Fairey Huntsman motor boat.

7. Start Sequence

The following 5-4-1-0 start sequence will be used at 10 minute intervals (RRS A26 and EAORA Part 1 SI 12.4), modifies EAORA Part 1 SI 12.5

Time (BST)	FLAG		SOUND SIGNAL
1855	Classes 4 and 3 warning signal	Numeral Pennant 3 raised	One sound signal
1856	Classes 4 and 3 preparatory signal	Code Flag P raised	One sound signal
1859	Code Flag P lowered		One long sound signal
1900	Classes 4 and 3 start	Numeral Pennant 3 lowered	One sound signal
1905	Classes 0, 1 and 2 warning signal	Numeral Pennant 0 raised	One sound signal
1906	Classes 0, 1 and 2 preparatory signal	Code Flag P raised	One sound signal
1909	Code Flag P lowered		One long sound signal
1910	Classes 0, 1 and 2 start	Numeral Pennant 0 lowered	One sound signal

8. General Recalls

Should a Class start be 'general recalled', the start recalled will be restarted as soon as possible. The recalled start does NOT go to the end of the sequence. The start of Classes yet to be started will be delayed accordingly. (RRS 29.2 also refers)

9. Yachts OCS At The Start

The numbers or names of yachts OCS may be broadcast by the Race Committee (EAORA Sailing Instructions Part 1 Para 12.8).

10. Combined Starts

If the starts of Classes are combined, then the start time will be that of the later Class. For example if Class 2 were to be combined with Class 3, the start for Class 3 plus Class 2 would be at 19:10.

11. Course To Be Sailed

The Course to be sailed will be as defined in the Notice of Race.

If a mark is not seen a yacht shall supply with the declaration satisfactory evidence that the mark has been passed correctly.

Competitors should be aware of the Sunk Precautionary area and take all necessary action to not impede shipping.

Competitors should be aware of the Greater Gabbard Offshore Wind Farm (Gallop) and the Greater Gabbard Offshore Wind Farm (Inner Gabbard).

The attention of yachts is drawn to their obligations under the IRPCAS. Competitors are further reminded of their responsibilities in Traffic Separation schemes (RRS 48.2, IRPCAS rule 10).

12. Shortening Or Changing The Course

The Committee may shorten in accordance with RRS 32 or change the course in accordance with the EAORA Sailing Instruction Part 1 paragraph 13.6. A competitor may ask for and receive information about either procedure without being subject to RRS 41, Outside Assistance. This amends RRS 41.

13. Communication

The Race Committee may broadcast information on VHF Ch72, call sign "Offshore One" and yachts are reminded to keep a watch on VHF ch72 during the start and as requested at the finish.

Yachts are reminded of their legal obligation to keep a continuous watch on VHF ch16

The Race Officer at the finish will confirm with Thames Coastguard the safe arrival of all vessels completing the race.

14. Retirements

Yachts retiring should inform the PRO as soon as possible by telephone +44 (0) 7793 372 548 or VHF and also inform Thames Coastguard on +44 (0) 1255 675518 or by VHF that they have retired.

15. Reporting In A Slow Race

When such time has elapsed that a yacht can at best achieve an average speed to the finish of less than 4 knots, she shall make every effort to inform the race office at the finish (+44 (0) 7793 372 548) or Thames Coastguard on VHF ch 16 or Tel: +44 (0) 1255 675518 of her position and progress, and shall continue to do so at reasonable intervals until she reports finishing or retiring.

16. Approach To The Finish

All yachts are required to set listening watch on VHF ch72 when approximately 30 minutes from the finish and at that time to call "Offshore One" to advise Estimated Time of Arrival.

At night or in poor visibility yachts should assist with identification at the finish line by calling "Offshore One" on approach. At all times be ready to assist with identification at the finish line and keep VHF watch until berthed.

The PRO will maintain a watch on VHF ch72 and mobile phone +44 (0) 7793 372 548.

17. Finish Line

The Finish Line will be as defined in the Notice of Race for the East Coast Race as published on the EAORA website.

Yachts are reminded to take their own finishing times together with the names of the yachts, if any, ahead and astern. If the finish line is not manned then the finishing times shall be delivered to the PRO as soon as possible with details of the method of taking the time. If this is a separate watch then that watch must be checked against the official time clock.

All yachts are requested to report in when they have crossed the finish line, either by confirming their finish on VHF ch72 to the committee boat or by phone to the PRO/ARO +44 (0) 7793 372 548.

18. Declarations

Competitors are reminded that under RORC General Condition 7(a) and EAORA Sailing Instructions Part 1 15.1 they are required to complete a Declaration Form. Yachts shall complete a Declaration Form and submit it to the PRO as soon as possible after the race. In the event of a yacht not entering the finish port, the Declaration maybe e-mailed to info@rbyc.org.uk . **Every member of the crew shall sign the Declaration Form.** Failure to comply with this rule may result in the yacht being excluded from the results. When a yacht retires from the race she shall write the reasons on her Declaration Form.

19. Scoring

EAORA will supply all race result details to the RORC as soon as possible after the race has finished such that points can be awarded in the RORC series.

EAORA yachts will be extracted from the results and rescored within the EAORA classes and awarded points within the EAORA series.

20. Trophies

East Coast Race Trophies:

Bob Stewart Memorial Trophy – Best Corrected Time IRC

Blackwater Trophy – IRC 1/2

WSV Breskens Trophy – IRC 3

Hugh Ellis Cup – IRC 4

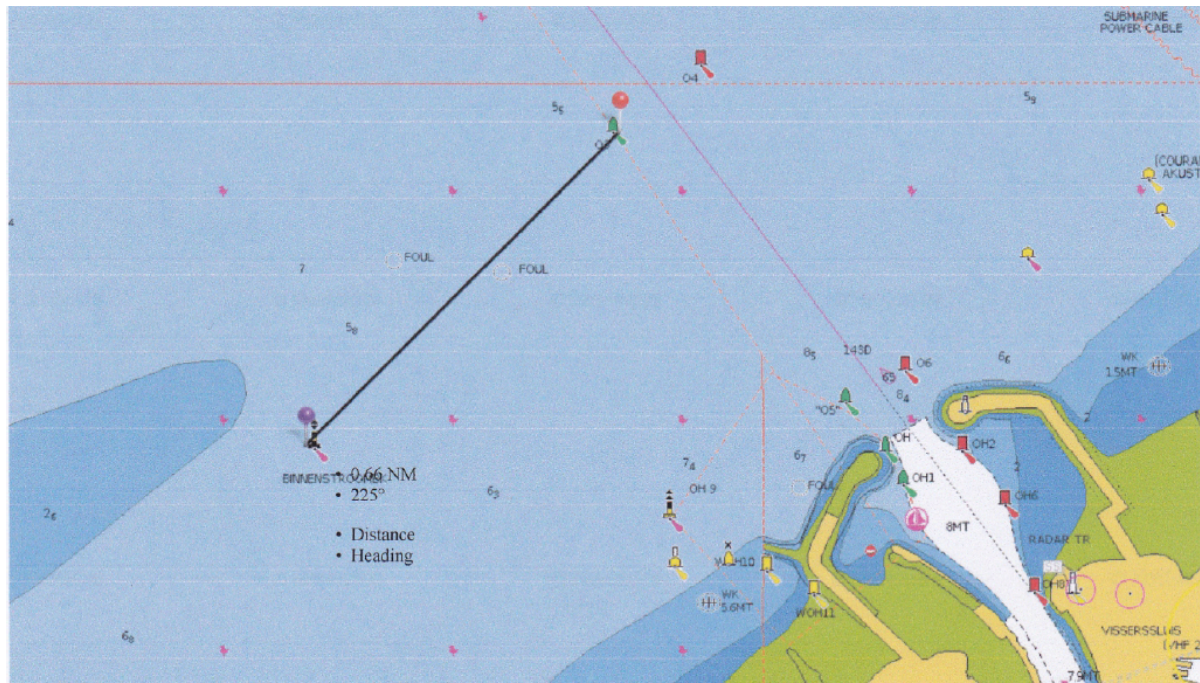
North Sea Yacht Club Trophy – Two Handed Class

Ailish Salver – First yacht home

END OF PART 2 SAILING INSTRUCTIONS

Additional Notes for Competitors (These notes are NOT part of the Sailing Instructions)

1. Diagram of the Finish Line



2. Committee Boat

By kind permission of Mr Andrew Wise the Committee Vessel at the start will be Jane, a Fairey Huntsman with a white hull and flying EAORA flags.

3. Shortening the Course

Whilst there is no time limit for this race the race may be shortened at a turning mark. Competitors are reminded that if the race is shortened at a mark of the course then that mark ceases to be a mark of the course and becomes a finishing mark and as such loses its 'defined side'. Should the Committee Boat be displaying Code Flag S at a turning mark, finish between the Committee Boat and the mark.

4. Prize Giving and Results

The Race Committee will post the results on the RBYC and EAORA websites as soon as possible after the racing is finished. The prizes will be presented at the Royal North Sea Yacht Club, Oostende after the race.

5. Launch Service

Competitors taking a swinging mooring from Priors Boat Yard (01621 782160 or thebridge@priorsboatyard.com) will have use of their launch service on request. The RBYC launch service (call sign RB1 on VHF 37) will be available on Friday afternoon.

6. Accommodation

Accommodation is available in the RBYC's en-suite guest rooms with a continental breakfast served in the morning.

Please contact the Club on 01621 782044 or email info@rbyc.org.uk for more information.

7. Car Parking

RBYC

There is ample car parking at the RBYC.

8. Race Officer

The race officer for the East Coast race is Andrew Wise, contactable on:-

07967 670 995

andy.wise@lemoncat.com